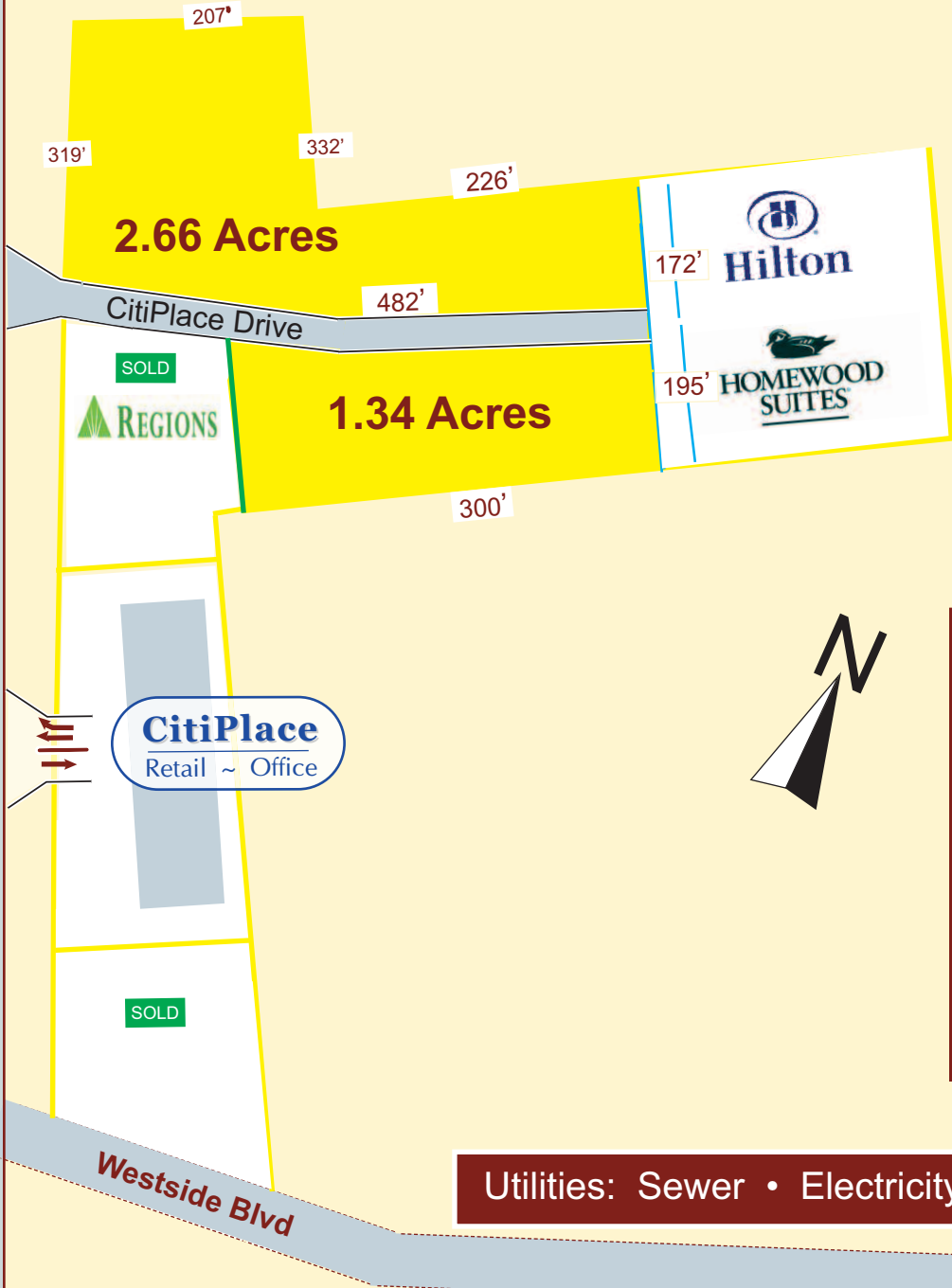


# PRIME COMMERCIAL LOTS LAND FOR SALE OR GROUND LEASE

1832 Martin Luther King BLVD. HOUMA, LA. 70360  
DEVELOPERS AND BROKERS WELCOME

- Rouses Supermarket
- SAM'S Club
- BLUE MARLIN CAR WASH
- The Landing Apartments
- Microtel

M  
L  
K  
  
B  
I  
V  
D  
  
  
  
L  
A  
  
H  
W  
Y  
  
3  
0  
4  
0



- Zone C-2 Commercial
- Flood Zone C
- Public Sewer
- Elevation - up to 7'
- Underground Utilities

8 PARISH RETAIL DRAW  
**450,000**

---

JOIN THIS NEW DEVELOPMENT

---

TRAFFIC COUNT  
**30,000 PLUS CARS DAILY**

Utilities: Sewer • Electricity • Gas • Water • Fire Hydrants



**RICHARD**

D E V E L O P M E N T

Henry J. Richard Ph: 985/856-5203

[www.richarddevelopment.com](http://www.richarddevelopment.com)