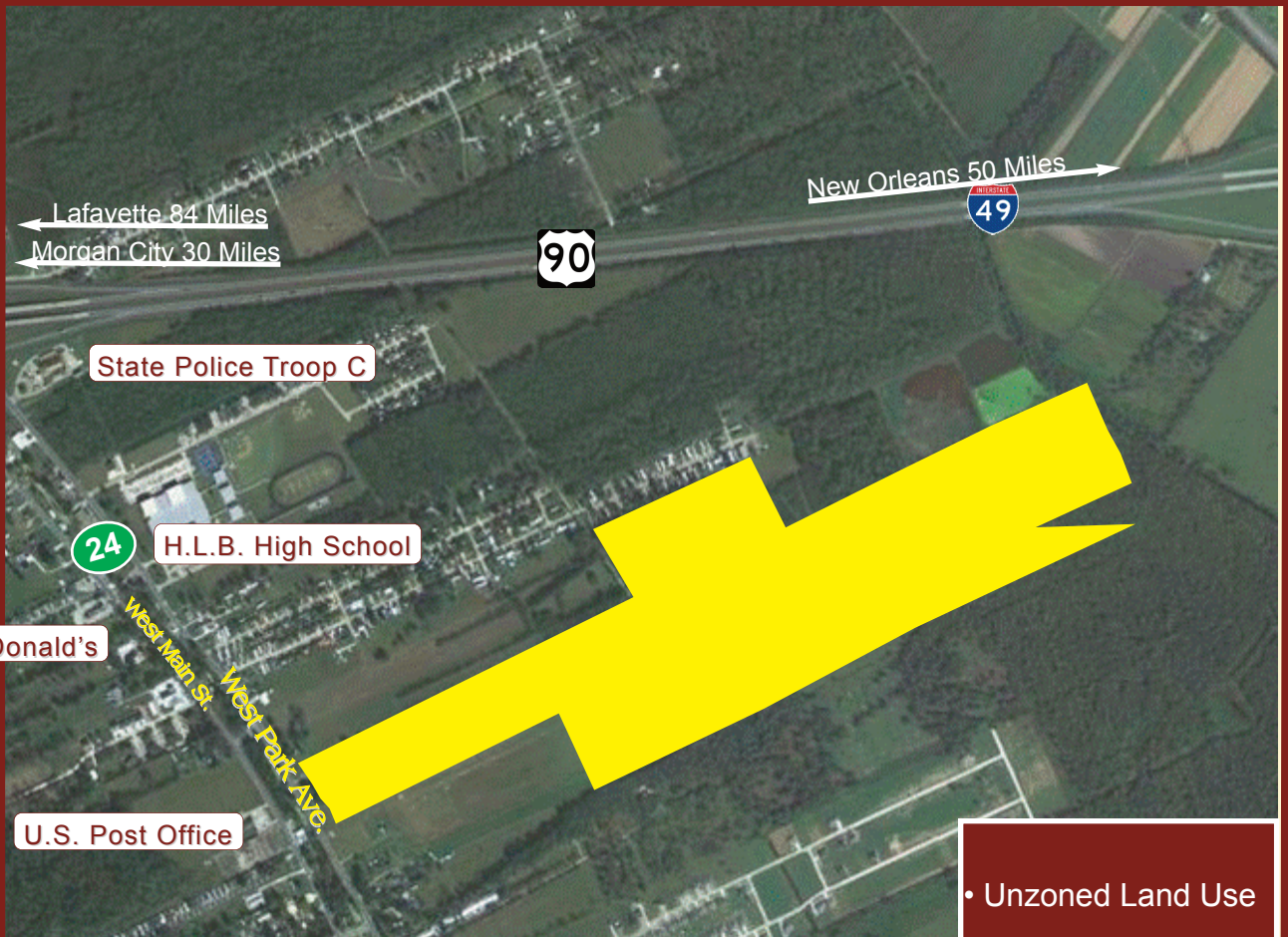


146 ACRES LAND FOR SALE

4445 WEST PARK AVE. (HWY. 24) ~ HOUMA, LOUISIANA



10 PARISH RETAIL DRAW
439,774

SAFEST CITY IN THE STATE

TRAFFIC COUNT
30,000 PLUS CARS DAILY

Developers
and
Contractors
Welcome

- Unzoned Land Use
- Flood Zone C
- Cleared
- Elevation - 8'-11'
- Drainage Mitigation

Utilities: Sewer • Electricity • Gas • Water • Fire Hydrants



Henry J. Richard ~ phone: 985/223-6012 ext. 227
www.RICHARDEVELOPMENT.com

RICHARD
DEVELOPMENT